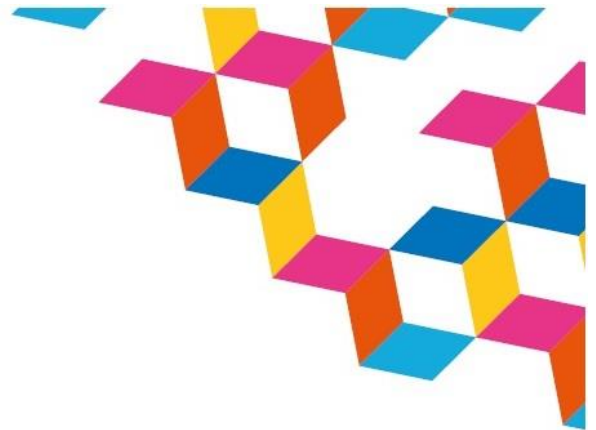


# Darzi Fellowship

Kent | Surrey | Sussex



<p><b>Title of the project</b></p>	<p>A European project to provide a sustainable model of integrated dementia services in Kent</p>
<p><b>Sponsor Name, Title, Host Organisation</b></p>	<p>Dr Phil Brighton, East Kent Hospitals NHS Foundation Trust</p>
<p><b>Explain the project in one sentence</b></p>	<p>Codesigning a holistic pathway for people living with dementia (PLWD) through improved education, integrated services and new model of dementia nursing home (a "dementia village") and tourism offers (a "guest house with care")</p>
<p><b>Tell us about the project and sponsor in no more than 175 words</b></p>	<p>I am a Consultant Geriatrician working for both the Acute and Community Health Trust. My prior experience as a Darzi Sponsor has fueled my ongoing passion for transforming care and services to meet the needs of our population, especially PLWD.</p> <p>CASCADE (Community Areas of Sustainable Care and Dementia excellence in Europe) is an Interreg 2 Seas funded initiative tasked with delivering a new model of dementia care and a network of dementia expertise in Europe. Spanning 4 years, expert partners from the UK, France, Belgium and the Netherlands will collaboratively develop the CASCADE model of care, focusing on what is important to PLWD. The 5 core principles are:</p> <ul style="list-style-type: none"> <li>• Living life to the full</li> <li>• Strengths based approach</li> <li>• Positive public perception</li> <li>• Safe environment for independent living</li> <li>• Personalised holistic care in the community</li> </ul>

	<p>We are building a new facility for PLWD in Dover comprising a novel nursing home, using existing housing, a community facility and a guest house with care. Innovative use of technology will underpin these services.</p> <p>A network of dementia experts will deliver a multilingual training package to equip our workforce, raise public awareness and destigmatise dementia.</p>
<p><b>What skills or attributes are you looking for in a fellow?</b></p>	<p>We would be looking for a flexible individual who is capable of critical thinking, and challenging preconceived ideas.</p> <p>There will be opportunities to work with experts and professionals in our partner organisations in the 2Seas region, as well as the local community and service users. Good communication skills would be an asset in this regard as will an interest</p>
<p><b>Who to contact? (Please include a brief bio, contact details and photo)</b></p>	<p>Dr Phil Brighton, Consultant Geriatrician (Kent Community Healthcare Foundation Trust &amp; East Kent Hospitals NHS Foundation Trust)</p> <p>I am a current Darzi sponsor and the Clinical Lead for CASCADE, East Kent. I have experience of Clinical Leadership and Quality Improvement, with a prior award-winning Health Foundation project.</p> <p><a href="mailto:Philip.brighton@nhs.net">Philip.brighton@nhs.net</a></p> <p>Mobile: 0782 795 8296</p>