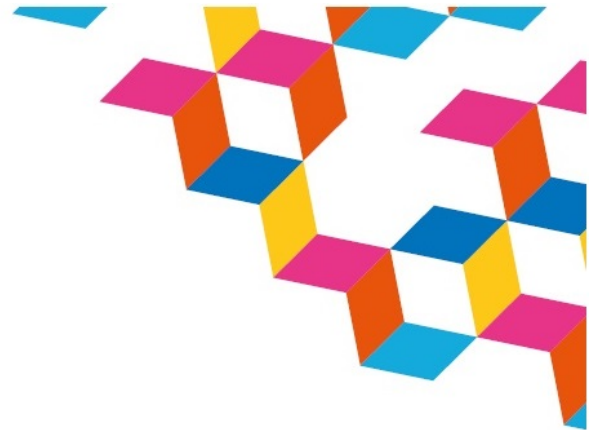



Darzi Fellowship

Kent | Surrey | Sussex



<p>Title of the project</p>	<p>Making Interface Geriatrics Work in West Kent.</p> <p>Aligned Incentives Contract (AIC) Frailty project (enhancing the frailty pathway, collaborating between acute trust and community partners)</p>
<p>Sponsor Name, Title, Host Organisation</p>	<p>Maidstone and Tunbridge Wells NHS Trust (MTW), in coproduction with:</p> <ul style="list-style-type: none"> • NHS West Kent CCG (WKCCG) • Kent Community Health Foundation Trust (KCHFT) • West Kent Health Ltd (GP Federation)
<p>Explain the project in one sentence</p>	<p>This project aims to provide excellent care by building frailty pathways linking the acute trust, community and primary care colleagues to ensure proactive, joined up and excellent quality care at all stages of a patient's Frailty diagnosis.</p>
<p>Tell us about the project and sponsor in no more than 175 words</p>	<p>A chance to develop a wide ranging strategy for frailty, developing the West Kent system vision for local care which includes improved care and outcomes for our frail population. This project will make a real difference to local health and wellbeing and also provide the fellow with essential skills for future work.</p> <p>Dr Peter Maskell is the Medical Director of the acute Trust, Consultant Geriatrician and sponsor.</p> <p>KCHFT provide extensive community services for frail patients including community, complex care and specialist nursing, home treatment services and community geriatrician. These services are aligned with 7 Primary Care clusters. West Kent Health Ltd are the local GP federation who provide primary care services and frailty GPwSI's. The project would involve building pathways to link services, signpost, reduce duplication and promote an 'Interface Geriatrics' model. This would</p>

	<p>be with a view to supporting seamless frailty care through:</p> <ul style="list-style-type: none"> • Initial 'finding out-diagnosis' phase, • Intermediate 'living with, planning for' (supportive care for patient and carer and advanced care planning) • Final 'towards the end' stage (supporting complex cases) and palliative care
<p>What skills or attributes are you looking for in a fellow?</p>	<p>The individual should be enthusiastic, well organised and passionate about frailty care provision and frail patients. A fellow with an infectious personality and good understanding of frailty pathways/ professionals/patients would be best placed to engage the multiple partners and organisations involved. They should be tenacious, creative, comfortable with independent working as well as being willing to work with services across the sector. An element of challenge will be required to question the status quo and resolve the “wicked problem” and work with all partners to realise the overarching vision and “do better things”. The individual will need a “can do” attitude and be able to lead short cycles of PDSA change and be able to spread their learning widely.</p>
<p>Who to contact? (Please include a brief bio, contact details and photo)</p>	<p>Dr Peter Maskell Medical Director Maidstone and Tunbridge Wells NHS Trust EA: Teresa Jarrett (teresa.jarrett@nhs.net) t: 01622 226412 e: peter.maskell@nhs.net</p>  <p><u>Biography:</u> Qualified from Royal Free Hospital 1995 MSc Gerontology 2003 Consultant appointment MTW NHS Trust 2006</p>

	<p>Medical Director Kent Community Health Foundation Trust 2011</p> <p>Medical Director MTW 2017</p> <p><u>Related Achievements:</u></p> <p>Set up interface geriatrics department East Kent 2015</p> <p>Set up MCP links with community trust (Ashford community providers). 2016</p> <p>Oversaw new frailty unit Maidstone Hospital 2017 and Tunbridge Wells Hospital 2018</p>
--	--